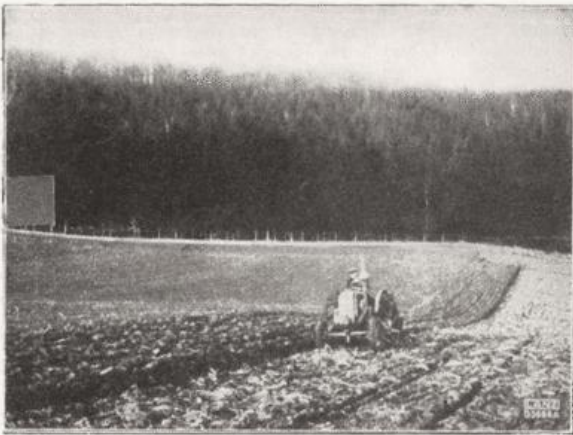


LANZ

12/20 HP

DUAL PURPOSE CRUDE OIL TRACTOR

You wanted it-
And **HERE IT IS.**



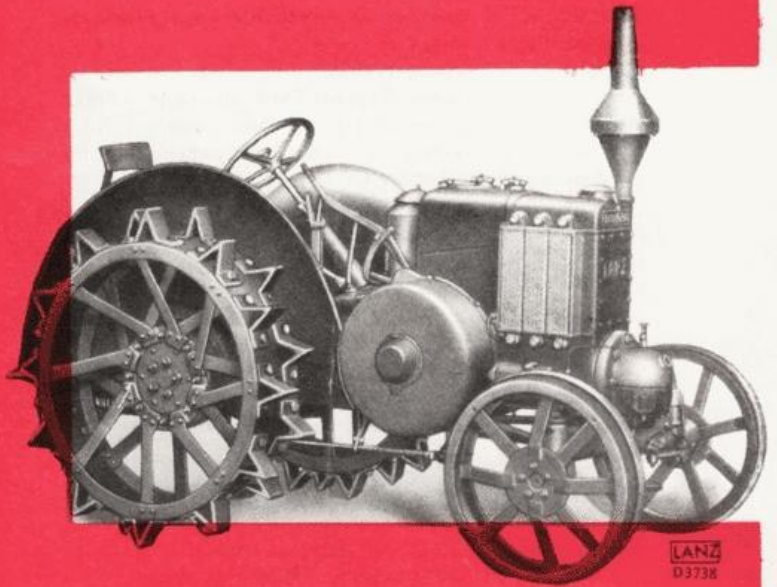
FOR FARM AND ROAD WORK

A Small LANZ
that demands the inspection of
every practical farmer, fruitgrower
and large market gardener



HEINRICH **LANZ** MANNHEIM
AKTIENGESELLSCHAFT

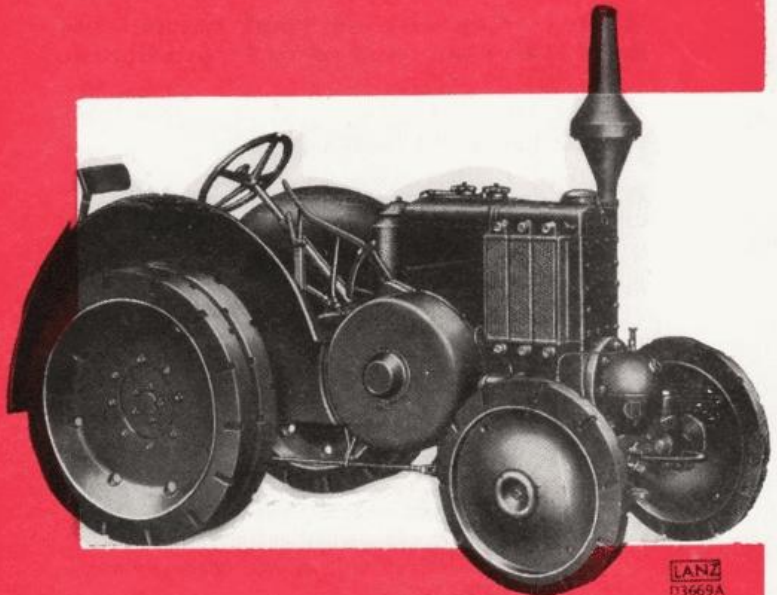
PDE 2204



**Exceptionally Economical.
Delivers Tremendous Power
for its Size.**

**Rugged and Reliable.
The Price makes this
Power Unit very attractive.**

**Low Maintenance and
Running Costs are an
established feature
of all LANZ Tractors.**



www.LANZ-BULLDOG-Homepage.de

Features

The 12/20 HP Tractor is available in 3 models:
3-speed Farm Tractor
6-speed Dual Purpose Tractor } with interchan-
6-speed Dual Purpose Express Tractor } geable wheels,
 the latter 2 models embodying, on farm wheels a **fully efficient farm tractor**, on rubber tyred wheels a **fully efficient road tractor in ONE machine.**

This convertability and versality, combined with low initial cost make this tractor type the ideal machine for small farms and industrial concerns. But on big farms, too, the Dual Purpose Tractor will be appreciated as a convenient supplemental power for seed bed work, row crop cultivation and similar light jobs, since it is of outstanding importance to fully load the tractor in order to extract the maximum economic benefit from it. On farm wheels only the 3 lower speeds are used.

No carburettor, magneto, valves, camshaft, or other intricate working parts.

No bevel gears in transmission.

Belt pulley: 21 $\frac{1}{4}$ " \varnothing , 6" face, is direct coupled to crankshaft and transmits full engine power. (On off-side of tractor).

Highly efficient thermosyphon **cooling system without pump.** The hot air is blown to the side and not onto the driver.

A very roomy platform, convenient for carrying small articles.

Large inspection plates make **gear box easily accessible.**

Fuels: Low grade crude or fuel oils, vegetable or animal oils.

Performance on Medium Soil

	Number of bottoms	Acreage per 10 hours in acres	Fuel Consumption imp. gall. per acre.
Ploughing 10-12" deep	2	5	2 $\frac{3}{8}$ - 2 $\frac{7}{8}$
7-10" deep	2	6.2- 6.8	2-2 $\frac{1}{4}$
4-5" deep	4	11.0-13.6	1-1 $\frac{1}{4}$
Cultivating	—	15.4-21.6	$\frac{3}{8}$ - $\frac{5}{8}$
Harrowing, Packing . . .	—	24.7-30.9	$\frac{3}{8}$ - $\frac{5}{8}$

Drawbar Pull on the field: abt 2200 lbs.

Haulage Capacity as road tractor on good even roads and up to 3% gradients:

	15	13	11	10	9	7.5	tons
on 1st gear.	1st	2nd	3rd	4th	5th	6th	

Drawbar Pull on the road: abt 3100 lbs.

Consumption: Fuel approx. 0.55 lbs per HP/hour
 Lubricating oil approx. 4.4 lbs per 10 hours working day.

Regular Equipment: Tractor complete with 48 spade lugs and road bands, skid rings, shell type fenders, platform with long drawbar, 2 sprung hitches, tools and accessories with tool case, grey coating.

Extra Equipment: Detachable angle grouters, corrugated strakes, rim and grouser extensions; row crop, peat and rolling wheels; wheel scrapers. Solid and pneumatic tyred wheels. Instant-on road grips for solid rubber tyred wheels. Power take-off, BOSCH electric lighting and starting equipment. Tarpaulin, canopy, full skirted fenders, air intake extension pipe, muffler etc.

Specification

of the 12/20 HP Farm and the 12/20 Dual Purpose Tractor on farm wheels

Rating: 12 HP at the drawbar; 20 HP on the belt.

Engine: Horizontal, valveless, single cylinder, two cycle, hot bulb engine. Fusible safety plug in cylinder head for protection against overheating.

Stroke: 210 mm — 8.27 inches.

Bore: 170 mm — 6.69 inches.

Displacement: 291 cubic inches.

Speed: 760 R. P. M.

Governor: Direct acting flywheel governor on crankshaft.

Lubrication: BOSCH positive force feed lubrication of engine, transmission and chassis. Pump returns used oil from crankcase to container after cleaning.

Oil Cleaner: Gauze strainer and cloth filter, system LANZ.

Air Cleaner: Oil soaked fibre padding, system LANZ.

Cooling: Thermosyphon without pump; double radiator of 2 interchangeable sections on the near and 3 on the off-side.

Belt Pulley: 21 $\frac{1}{4}$ " \varnothing , 6" face.

Speed: 760 R.P.M.

Belt Speed: 4230 feet per Min.

Gear Box:

Clutch: 3-shoe friction clutch operated by foot lever.

Gear Change: Selector ball type.

Working Speeds of all 3 models on farm wheels: 1.9-2.5-3.5 M.P.H. forward; 2.5 M.P.H. reverse.

Chassis: Frameless, 3-point-suspended tractor body is built up of the cylinder-, crank-, gear- and rear axle housings, securely bolted together as one unit.

Front Axle: Agricultural unsprung, Dual Purpose Tractor sprung.

Track Width Front: 44"; **Rear:** 48", between centres.

Brakes: one lever and one pedal operated gear brake.

Ground Clearance: 10".

Rear Wheels: 41 $\frac{3}{4}$ " \varnothing , 12" wide.

Front Wheels: 29" \varnothing , 5" wide.

Road Bands: 53 $\frac{1}{2}$ " \varnothing , 2 $\frac{3}{4}$ " wide.

Drawbar: Each one shock absorbing sprung hitch for implements: vertical height: 11 $\frac{3}{4}$ "-16 $\frac{1}{4}$ "-20"-23 $\frac{1}{2}$ " for trailers: lateral adjustment: 41" vertical height: 22 $\frac{1}{2}$ ".

Turning Radius: 12'

Tank Capacity:

Fuel: 11 imp. gallons. **Oil:** $\frac{3}{4}$ imp. gallons.

Water: 7 $\frac{3}{4}$ imp. gallons.

Weight with Water and Fuel: 5100 lbs.

Overall Width: 5' 4 $\frac{1}{2}$ ", **Length:** 9'.

The Dual Purpose Tractor with single solid rubber tyres 770x120 mm on front, double of 1060x150 mm on rear wheels, and

The Dual Purpose Express Tractor with single pneumatic tyres of 30" x 5" on front, 40" x 8" on rear wheels

deviate from the above specification as follows:

Travelling speeds:

of **Dual Purpose Tractor:**

1.8, 2.4, 3.4, 3.9, 6.8, 9.3 MPH forward; 2.4 and 6.8 MPH reverse

of **Dual Purpose Express Tractor:**

1.8, 2.4, 3.4, 7.1, 9.8, 13.7 MPH forward; 2.4 and 9.8 MPH reverse.

Front axle: sprung

Track Width Front: 45 $\frac{1}{2}$ " } between centres.

Track Width Rear: 52 $\frac{3}{8}$ " }

Brakes: one lever gear brake and one pedal rear wheel brake.

Rear Wheels: 42" \varnothing , 2 x 5 $\frac{1}{2}$ " wide.

Front Wheels: 30 $\frac{1}{2}$ " \varnothing , 4 $\frac{3}{4}$ " wide.

Weight: with (6) solid tyres 6950 lbs.

with (4) pneumatic tyres 5510 lbs.